

Agency

Public Utilities Commission

Agency Mission

To provide fair regulation of public utilities, CATV, common carriers, and major energy facilities; ensure just and reasonable rates; ensure sufficient utility infrastructure to promote economic development; implement legislative mandates that facilitate renewable electric generation, improve water availability, deliver rapid communications and assure that Rhode Island is on the cutting edge of reliability and environmental quality regulation; and cooperate with other state and federal government agencies to coordinate efforts to meet the above objectives.

Agency Description

The Public Utilities Commission (PUC) comprises two distinct regulatory bodies: a three member Commission (Commission) and the Division of Public Utilities and Carriers (Division). The Public Utilities Commission serves as a quasi-judicial tribunal with jurisdiction, powers, and duties to implement and enforce the standards of conduct under §39-1-27.6 and to hold investigations and hearings involving the rates, tariffs, tolls, and charges, and the sufficiency and reasonableness of facilities and accommodations of railroad, ferry boats, gas, electric distribution, water, telephone, telegraph, and pipeline public utilities, the location of railroad depots and stations, and the control of grade crossings, the revocation, suspension or alteration of certificates issued pursuant to §39-19-4, appeals under §39-1-30, petitions under §39-1-31, and proceedings under §39-1-32. Through participation in the Energy Facility Siting Board, the Commission's chair also exercises jurisdiction over the siting of major energy facilities, pursuant to Chapter 42-98.

The Division, which is headed by an Administrator, who is not a Commissioner, exercises the jurisdiction, supervision, powers and duties not specifically assigned to the Commission, including the execution of all laws relating to public utilities and carriers and all regulations and orders of the Commission governing the conduct and charges of public utilities. The Division has exclusive jurisdiction over the rates, tariffs, tolls and charges, and the sufficiency, and reasonableness of facilities and accommodations of common carriers of property and passengers over the State's public roadways, pursuant to Chapters 39-12, 39-13, and 39-14. Additionally, the Division supervises and regulates Community Antenna Television Systems (CATV) in Rhode Island; certifies all public utilities; and has independent regulatory authority over the transactions between public utilities and affiliates, and all public utility equity and debt issuances.

Statutory History

The PUC and its predecessor agency, the Rhode Island Railroad Commission, have been regulating utilities in this state since 1839. The Railroad Commission was later abolished by an act of the legislature, leading to the creation of the more comprehensive Public Utility Commission in 1912. From 1981 to 1996, the duties of the Administrator of the Division and Chairperson of the Commission were combined in a single position. The Utility Restructuring Act of 1996 later divided these duties into two separate positions: Chairman of the Commission and Administrator, Division of Public Utilities and Carriers.

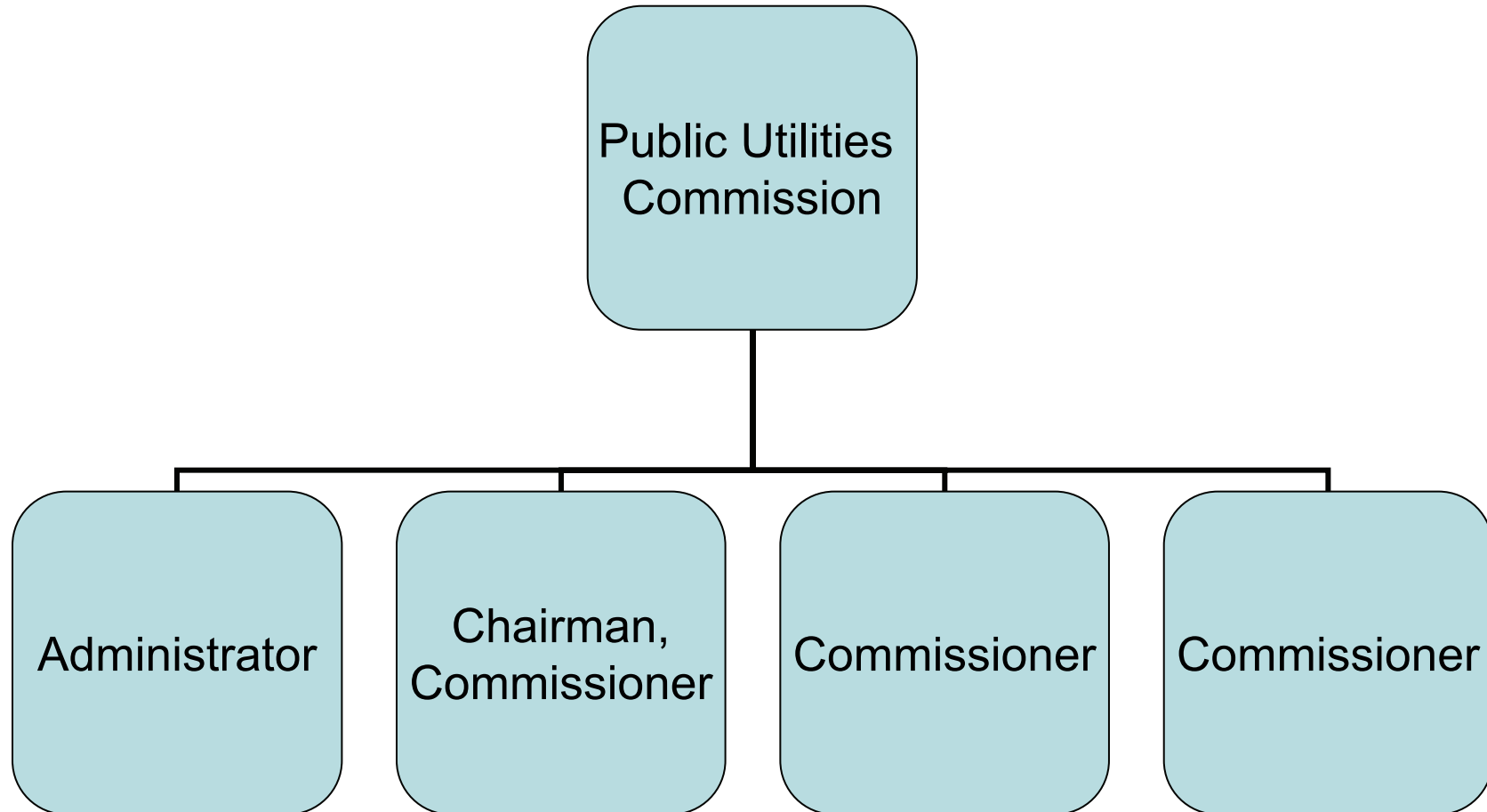
Budget

Public Utilities Commission

	FY 2010 Audited	FY 2011 Audited	FY 2012 Enacted	FY 2012 Revised	FY 2013 Recommend
Expenditures By Program					
Central Management	5,989,976	6,088,904	8,105,006	8,117,120	8,733,815
Total Expenditures	\$5,989,976	\$6,088,904	\$8,105,006	\$8,117,120	\$8,733,815
Expenditures By Object					
Personnel	5,369,382	5,443,519	7,148,290	7,111,636	7,271,981
Operating Supplies and Expenses	574,985	586,285	923,379	972,147	1,402,497
Assistance and Grants	336	224	337	337	337
Subtotal: Operating Expenditures	5,944,703	6,030,028	8,072,006	8,084,120	8,674,815
Capital Purchases and Equipment	45,273	58,876	33,000	33,000	59,000
Total Expenditures	\$5,989,976	\$6,088,904	\$8,105,006	\$8,117,120	\$8,733,815
Expenditures By Funds					
Federal Funds	105,096	266,641	309,373	321,487	349,167
Restricted Receipts	5,884,880	5,822,263	7,795,633	7,795,633	8,384,648
Total Expenditures	\$5,989,976	\$6,088,904	\$8,105,006	\$8,117,120	\$8,733,815
FTE Authorization	45.5	46.0	46.0	46.0	47.0
Agency Measures					
Minorities as a Percentage of the Workforce	11.6%	11.3%	13.1%	13.1%	13.1%
Females as a Percentage of the Workforce	39.5%	38.6%	39.2%	39.2%	39.2%
Persons with Disabilities as a Percentage of the Workforce	2.3%	2.2%	2.2%	2.2%	2.2%
Percentage of Motor Carriers Applications for which Formal Written Reports have been completed within Sixty Business Days of Filing	96.0%	94.0%	95.0%	95.0%	95.0%
Resolve all consumer inquiries related to cable service within five (5) days, but no longer than a thirty (30) day period.	100.0%	100.0%	100.0%	100.0%	100.0%
Percentage of Consumer Services Offered that Meet Completion Schedules	83.0%	84.0%	86.0%	86.0%	95.0%

The Agency

Public Utilities Commission



Personnel

Public Utilities Commission

Central Management

	Grade	FY 2012		FY 2013	
		FTE	Cost	FTE	Cost
Classified					
Assistant Director for Legal Services	0141A	1.0	118,178	1.0	118,385
Chief Public Utilities Accountant	0140A	1.0	112,660	1.0	112,660
Chief of Legal Services - Commission	0139A	1.0	108,755	1.0	108,755
Associate Administrator, Operations	0136A	1.0	96,325	1.0	96,325
Chief Financial Analyst	0138A	1.0	95,321	1.0	95,321
Assistant to Chief Public Utilities Accountant	0034A	1.0	94,173	1.0	94,173
Assoc. Public Util. Admin - Cable TV (Leg)	0136A	1.0	90,795	1.0	90,795
Rate Analyst V	0033A	4.0	326,094	4.0	331,193
Public Utilities Admin. & Operations Officer	0138A	1.0	80,946	1.0	85,034
Assoc. Public Utilities Adm for Motor Carriers	0134A	1.0	80,391	1.0	80,391
Senior Legal Counsel	0134A	2.0	158,200	2.0	158,200
Investigative Auditor	0133A	1.0	75,602	1.0	78,133
Senior Reg. Cable TV Analyst	0029A	1.0	73,126	1.0	73,126
Public Utilities Engineering Specialist II	0028A	4.0	265,796	4.0	265,796
Public Utilities Analyst IV	0027A	1.0	66,026	1.0	66,026
Chief of Information and Public Relations	0129A	1.0	63,832	1.0	63,832
Principal Auditor	0028A	1.0	61,485	1.0	61,485
Chief Field Investigator	0024A	1.0	54,941	1.0	54,941
Chief Consumer Agent	0024A	1.0	52,496	1.0	54,115
Public Utilities Analyst II	0022A	1.0	50,855	1.0	50,855
Information Service Technician II	0020A	1.0	50,312	1.0	50,312
Compliance Inspector	0020A	2.0	89,617	2.0	90,528
Information Service Technician	0016A	2.0	83,170	2.0	86,015
Consumer Agent	0018A	3.0	123,786	4.0	163,966
Customer Service Specialist I	0015A	1.0	35,121	1.0	35,711
	Subtotal	36.0	\$2,508,003	37.0	\$2,566,073
Unclassified					
Administrator, Division of Public Util. & Car.	0847A	1.0	149,844	1.0	149,844
Chairman (PUC)	0842A	1.0	125,071	1.0	125,071
Commissioner (PUC)	0839A	2.0	220,522	2.0	220,522
Principle Policy Associate	0837A	1.0	92,586	1.0	92,586
Administrative Assistant	0129A	1.0	79,060	1.0	79,060
Staff Attorney II	0830A	1.0	70,506	1.0	73,832
Administrative Assistant	0822A	1.0	58,593	1.0	58,593
Special Project Coordinator	0827A	1.0	57,053	1.0	59,743
Administrative Assistant	0822A	1.0	49,113	1.0	50,885
	Subtotal	10.0	\$902,348	10.0	\$910,136
Overtime		-	26,000	-	26,000
Turnover		-	-	-	-
	Subtotal	-	\$26,000	-	\$26,000
	Total Salaries	46.0	\$3,436,351	47.0	\$3,502,209

(1)

Personnel

Public Utilities Commission

Central Management

	Grade	FY 2012		FY 2013	
		FTE	Cost	FTE	Cost
Benefits					
Defined Contribution Plan		-	-	-	34,763
FICA		-	262,881	-	267,919
Medical		-	546,626	-	620,328
Payroll Accrual		-	-	-	21,468
Retiree Health		-	236,949	-	241,468
Retirement		-	783,699	-	736,227
Subtotal		-	\$1,830,155	-	\$1,922,173
Total Salaries and Benefits		46.0	\$5,266,506	47.0	\$5,424,382
Cost Per FTE Position			\$114,489		\$115,412
Statewide Benefit Assessment		-	127,887	-	130,356
Subtotal		-	\$127,887	-	\$130,356
Payroll Costs		46.0	\$5,394,393	47.0	\$5,554,738
Purchased Services					
Building and Grounds Maintenance		-	30,683	-	30,683
Clerical and Temporary Services		-	100,000	-	100,000
Design and Engineering Services		-	1,000	-	1,000
Information Technology		-	100,000	-	100,000
Legal Services		-	507,000	-	507,000
Management and Consultant Services		-	965,847	-	965,847
Other Contract Services		-	9,713	-	9,713
Training and Educational Services		-	3,000	-	3,000
Subtotal		-	\$1,717,243	-	\$1,717,243
Total Personnel		46.0	\$7,111,636	47.0	\$7,271,981
Distribution By Source Of Funds					
Federal Funds		2.9	294,712	2.9	305,910
Restricted Receipts		43.1	6,816,924	44.1	6,966,071
Total All Funds		46.0	\$7,111,636	47.0	\$7,271,981

¹ Reflects the addition of one FTE position [Consumer Agent (Gr. 0018A)] in the Consumer Unit section to alleviate unit's workload.